

About this property:

Noe Valley 1 Bedroom Flat

Sqft: 800
Bedrooms: 1
Sleeps: 1-4
Floor: 1
Property Type: San Francisco FLAT



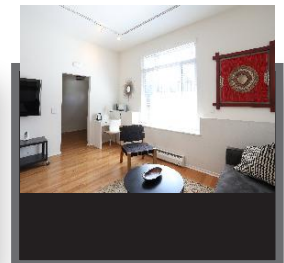
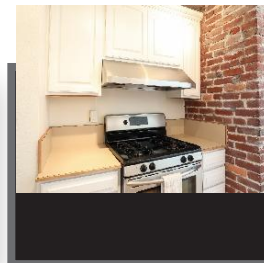
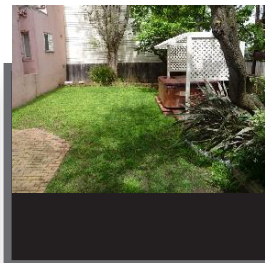
Enjoy this very 'San Francisco' flat located near the Noe Valley 24th Street corridor and the J-Church light rail line.

Featuring 800+ square feet of living space, pristinely decorated, this large 1-br bonus flat is a comfortable place to come home to.

Hardwood floors, large windows, a red brick wall creating a lofty feel, private outdoor deck space, shared manicured yard, King bed, lots of closets, 60-inch blue-ray flat screen TV, kitchen with gas stove and dining counter space and private washer dryer in ...

Features & Amenities

Parking: None
Pets: No
Workout center: None
Workspace area: None
Pool: None
A/C: None
Secure access: None
Washer/dryer: In Building
Private outdoor space: Balcony
Near public transport: Less than 0.25 miles



AvenueWest San Francisco

2525 Van Ness Avenue, Suite 207, San Francisco, CA 94109

SanFrancisco@avenuewest.com

<http://SanFrancisco.AvenueWest.com>

Local: 415-362-9600